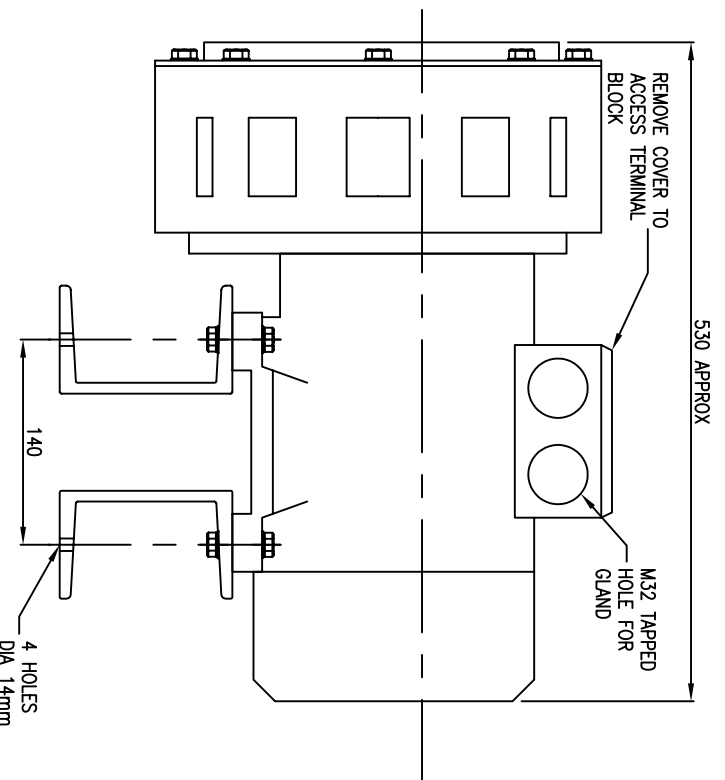


SIDE VIEW



FRONT VIEW

DESCRIPTION

WEATHERPROOF MOTOR DRIVEN SIREN
(SINGLE ROTOR)

MODEL

GP10

SPECIFICATION

MOUNTING : HORIZONTAL MOUNT
 SOUND OUTPUT : 140dB(A) ±3dB
 @ 1 METRE
 SOUND FREQUENCY : 475Hz
 VOLTAGE : 400VAC
 PHASE : 3
 MOTOR POWER : 5500 WATTS
 NORMAL RATING : CONTINUOUS
 START CURRENT : 55 Amps (400V)
 RUN CURRENT : 11 Amps (400V)
 WEIGHT : 80 kg
 INGRESS PROTECTION : IP 55

MATERIAL

MATERIAL : CAST ALUMINIUM
 FINISH : ENAMEL GREY, RED ROTOR
 OPERATING TEMP : -20°C TO +40°C

ALL DIMENSIONS IN MILLIMETERS

HEAD OFFICE :

SEAGULL SAFETY LTD

45 CHESTNUT AVENUE
 WOKINGHAM, BERKSHIRE
 RG41 3HW, ENGLAND UNITED KINGDOM
 Tel: 44-118-978 3978 Fax: 44-118-977 5261

REGIONAL OFFICE :

SEAGULL SAFETY (S) PTE LTD

#07-06 PERFECT INDUSTRIAL BUILDING
 1 GENTING LINK
 SINGAPORE 349518
 Tel: (65) 6747 9646 Fax: (65) 6744 4028

TITLE :

**GP10 WEATHERPROOF
 MOTOR DRIVEN SIREN**

REV.	DATE	ISSUED FOR APPROVAL	DESCRIPTION	DRAWN	CHECK'D
0	17.09.02	AD		VB	AD

THIS IS THE PROPERTY OF SEAGULL SAFETY LTD AND IS ONLY ISSUED ON CONDITION THAT NO COPY IS TAKEN OR REPRODUCTION OR DISCLOSURE TO A THIRD PARTY EITHER WHOLLY OR IN PART IS MADE WITHOUT THE WRITTEN CONSENT OF SEAGULL SAFETY LTD.

DRAWN BY	VB	DATE	17.09.2002
CHECKED BY	AD	DATE	17.09.2002
DWG NO :	SS77100-111		
REVISION	0		