



CERTIFICATION

ATEX: No. Baseefa11ATEX0116
 IECEX: No. IECEX BAS 11.0055
 Explosion proof and dust protection
 SIL 2 Approval certification No.
 C138_CT001rev1.docx

Standard Version

Transmitter rated up to 5W input:
 Ex d IIC T6 Ta - 40 °C to + 70 °C Gb
 Ex tb IIIC T85 °C Ta - 40 °C to + 70 °C Db IP66

Special Applications

Transmitter rated up to 10W input:
 Ex d IIC T6 Ta - 40 °C to + 60°C Gb
 Ex tb IIIC T85 °C Ta - 40 °C to + 60 °C Db IP66

Special applications include:

- Relay board substituted by another PC board allowing alternative functions / outputs.
- Use of higher power sensors.
- Alternative customer interface requirements

OPTIONAL RELAY BOARD

RELAYS (contact type)

- Alarm 1 (normally open)
- Alarm 2 (normally open)
- Alarm 3 (normally open)
- Fault (changeover)

CONTACT RATING (resistive load)

- Alarm Relays
5 A, 250 VAC / 30 VDC
- Fault Relay
3 A (NC), 5 A (NO), 250 VAC / 30 VDC

TECHNICAL SPECIFICATION

DETECTOR INPUTS

- Catalytic / Pellistor
- Infrared
- Electrochemical
- Photo Ionisation

ENCLOSURE

Aluminium or Stainless Steel

OUTPUTS

- 4-20 mA
- Optional Relay Board
- Optional HART Board

TEMPERATURE

Enclosure: - 40 °C to + 70 °C
 Electronics: - 20 °C to + 70 °C

WEIGHT

- 2.3 kg (Aluminium)
- 3.2 kg (Stainless Steel)

SUPPLY VOLTAGE

8 to 32 VDC

MAXIMUM CURRENT CONSUMPTION

- 170 mA @ 24 VDC
- 250 mA @ 24 VDC with Relay Board
(all relays energized)

ENTRIES

- Detector : 1 x M20 x 1.5P
- Cable : 2 x M20 x 1.5P (2 x 3/4" NPT Optional)

DISPLAY

2 line, 16 Character OLED display

CALIBRATION

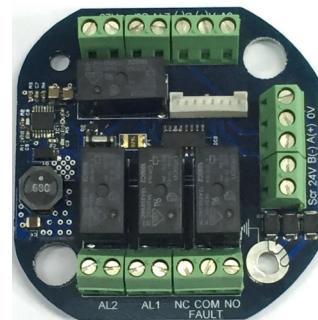
Non-intrusive magnet calibration

HUMIDITY

0 to 95% RH, non-condensing

INGRESS PROTECTION

IP66

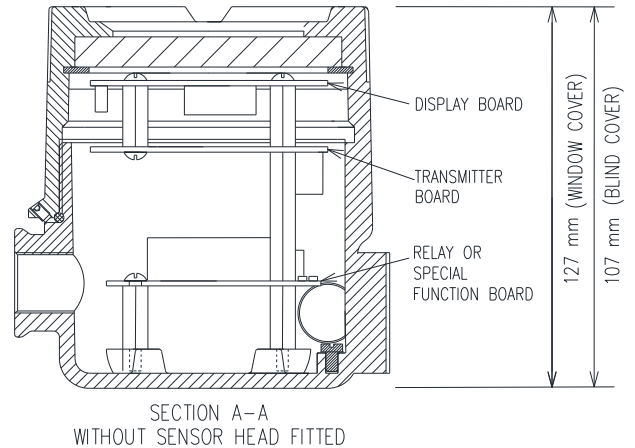
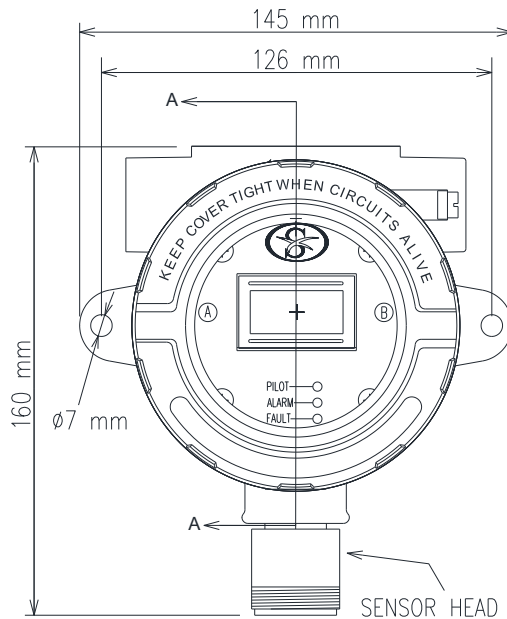




SEAGULL SAFETY

SS76-TX Gas Detector Transmitter

SIL 2 Approved



ORDERING INFORMATION

SS76-TX

TYPE OF TRANSMITTER BOARD

Code:

CAT: Catalytic / IR board

ECC: Electrochemical board

RELAY BOARD

Code:

0 : Relay board not fitted

1 : Relay board fitted

ENCLOSURE TYPE

Code:

0 : Aluminium

1 : Stainless steel

GAS SENSOR HEAD TYPE

Refer to SS76-TX F-Series

Gas Sensor Head datasheet Table 1

EXAMPLE:

SS76-TX-CAT-1-0-FLEL1

Transmitter c/w aluminium enclosure fitted with catalytic / infrared transmitter board and relay board.

Gas sensor head type: standard catalytic - FLEL1



ISO 9001:2015 CERT NO.: 621945

Seagull Safety Ltd
45 Chestnut Avenue,
Wokingham RG41 3HW
Berkshire, England
Tel: (44) 1753 474 112
Fax: (44) 118 977 5261

Seagull Safety (Singapore) Pte Ltd
1 Genting Link,
#07-06 Perfect One
Singapore 349518
Tel: (65) 6747 9646
Fax: (65) 6744 4028

Email: info@seagullssafety.com

www.seagullssafety.com