



## SS76-TX Gas Detector Transmitter

SIL 2 Approved



TYPE: SS76-TX

### CERTIFICATION

ATEX: No. Baseefa11ATEX0116X

IECEX: No. IECEX BAS 11.0055X

Explosion proof and dust protection

II 2 GD Ex d IIC T4 Ta -20°C to +70°C Gb

Ex tb IIC T135°C Ta-20°C to +70°C Db IP6X

SIL 2 Approval version

SIL 2 Approved certificate

C138\_CT001 rev.2

### Special Applications

Special applications include:

- Relay board substituted by another PC board allowing alternative functions / outputs.
- Alternative customer interface requirements

### OPTIONAL RELAY BOARD

*(Required for SIL 2 version)*

RELAYS (contact type)

Alarm 1 (normally open)

Alarm 2 (normally open)

Alarm 3 (normally open)

Fault (changeover)

CONTACT RATING (resistive load)

Alarm Relays

5 A, 250 VAC / 30 VDC

Fault Relay

3 A (NC), 5 A (NO), 250 VAC / 30 VDC

### TECHNICAL SPECIFICATION

#### DETECTOR INPUTS

Catalytic / Pellistor

Infrared

Electrochemical

Photo Ionisation

#### ENCLOSURE

Aluminium or Stainless Steel

#### OUTPUTS

4-20 mA

Optional Relay Board

Optional HART Board

#### TEMPERATURE

20 °C to + 70 °C

#### WEIGHT

2.3 kg (Aluminium)

3.2 kg (Stainless Steel)

#### SUPPLY VOLTAGE

8 to 32 VDC

#### MAXIMUM CURRENT CONSUMPTION

170 mA @ 24 VDC

250 mA @ 24 VDC with Relay Board

(all relays energized)

#### ENTRIES

Detector : 1 x M20 x 1.5P

Cable : 2 x M20 x 1.5P (2 x 3/4" NPT Optional)

#### DISPLAY

2 line, 16 Character OLED display

#### CALIBRATION

Non-intrusive magnet calibration

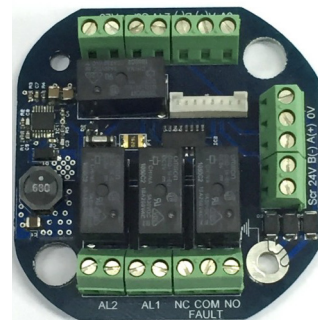
#### HUMIDITY

0 to 95% RH, non-condensing

#### INGRESS PROTECTION

IP64 to IP66

Depending on type of water shield fitted to detector head.

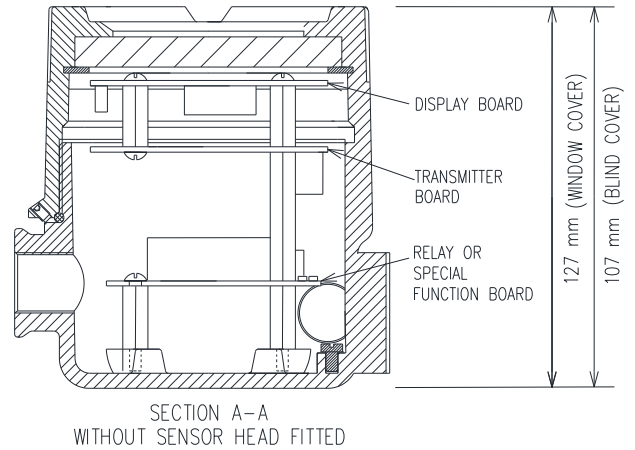
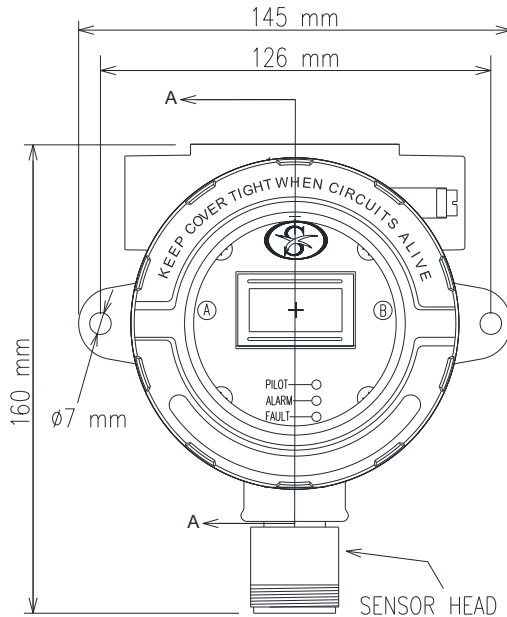




# SEAGULL SAFETY

## SS76-TX Gas Detector Transmitter

SIL 2 Approved



### ORDERING INFORMATION

SS76-TX

#### TRANSMITTER VERSION

Code:

B : Standard

S : SIL 2 Approved

#### TYPE OF TRANSMITTER BOARD

Code:

CAT: Catalytic / IR board

ECC: Electrochemical board

#### RELAY BOARD

Code:

0 : Relay board not fitted

1 : Relay board fitted

#### ENCLOSURE TYPE

Code:

0 : Aluminium

1 : Stainless steel

#### GAS SENSOR HEAD TYPE

Refer to SS76-TX F-Series

Gas Sensor Head datasheet Table 1

### EXAMPLE:

SS76-TX-B-CAT-1-0-FLEL1

Transmitter, standard version fitted with catalytic / IR board and relay board in aluminium enclosure.

Gas sensor head type:  
standard catalytic - FLEL1



ISO 9001:2015 CERT NO.: 621945

Seagull Safety Ltd  
45 Chestnut Avenue,  
Wokingham RG41 3HW  
Berkshire, England  
Tel: (44) 1753 474 112  
Fax: (44) 118 977 5261

Seagull Safety (Singapore) Pte Ltd  
1 Genting Link,  
#07-06 Perfect One  
Singapore 349518  
Tel: (65) 6747 9646  
Fax: (65) 6744 4028

Email: [info@seagullssafety.com](mailto:info@seagullssafety.com)

[www.seagullssafety.com](http://www.seagullssafety.com)